

SIXTH FORM  
@  
FREWEN COLLEGE

PROSPECTUS 2015



# WELCOME FROM THE PRINCIPAL



I am delighted to introduce you to this guide to Frewen College's Sixth Form.

Frewen has been providing outstanding educational opportunities and support for young people with dyslexia and related learning difficulties for many years, in its beautiful and historical setting in East Sussex.

Frewen College Sixth Form offers a range of individually-tailored pathways for pupils with a wide range of abilities who are looking for the combination of academic or vocational courses, additional support with their literacy, dyslexia and/or related Specific Learning Difficulty, and, if required, boarding.

Existing Frewen pupils have the opportunity to stay at the College and build on the successes already achieved, in the familiar and supportive environment, and with the teachers that they know, and who know them.

However, the Sixth Form has proved equally popular and successful with students from elsewhere, and we look forward to welcoming and getting to know more of you in the future.

I hope this guide gives you some idea of the advantages of studying at Frewen, and some of the possibilities on offer. You may have questions, and the team at Frewen will be only too happy to answer these, or to arrange for you to visit the College.

I look forward to meeting you at the College in the future.

Nick Goodman, Principal



# WHY FREWEN COLLEGE?

Frewen College can provide the mix of support and independence that many students with specific learning difficulties still need in their Sixth Form years.

Set in 60 acres of playing fields, gardens and grounds, with access to another 100 acres of ancient parkland, there is space to grow, to develop, to flourish.

All our classroom staff, including Teaching Assistants, have specialist dyslexia training, and the great majority have specialist qualifications. We have a comprehensive Therapy and Wellbeing team including Speech and Language Therapists, Occupational Therapists, and a Physiotherapist with training in sensory integration. We also benefit from the services of a trained Counsellor.

Our average teacher/student ratio is maintained at better than 1 to 6, and one-to-one support is available where appropriate.

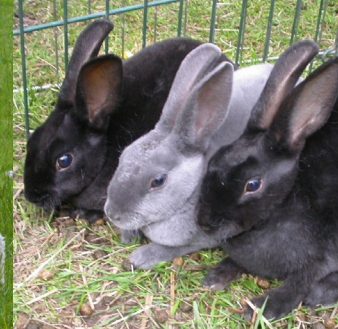
We are immensely proud of our students. To quote our most recent Ofsted report "The pupils' behaviour is outstanding. Pupils are courteous to their peers and have positive attitudes to learning."

We take the pastoral side of our role just as seriously as the academic. All Sixth Formers are assigned a mentor to support them in their school work, help with applications to Higher Education, or CVs for jobs.

- Small class sizes
- One-to-one support
- Weekly and full boarding
- Day places
- Newly refitted Science labs
- 3 ICT suites
- Tennis and basketball/netball court
- Mountain bike trail
- Fitness suite
- In-house student counsellor
- Specialist teachers
- On-site therapist team
- In-house catering using produce from our extensive grounds







## WORKING IN PARTNERSHIP

Frewen Sixth Form offers a truly holistic education. Working in partnership with Bexhill College and Plumpton College ensures a wide range of courses to choose from, from Level 1 to Level 3. Working in partnership with parents and students ensures academic, social and personal needs are met.

The aim of Frewen's Sixth Form is to provide support where needed, whilst encouraging each student's movement towards greater independence, in preparation for adult working life. The emphasis is on tailor-made teaching through a personalised programme of study and support.

### How does it work?

You will be based at Frewen College, and will follow an individually designed programme of academic courses and extra-curricular activities, depending on your needs and interests.



## OUR PARTNER COLLEGES

For between twelve and fifteen hours per week you will follow your main study option, which will be chosen from the wide range of courses provided by one of our partner colleges.

Frewen College will provide your transport to and from the partner college, as required, and there will be a member of Frewen staff on hand for as long as you need it. Lunch is also provided.

At Bexhill College, Frewen students will be part of a tutor group run by one of their subject teachers. This will help them develop new friendships, feel part of things and give them another adult they can ask for help. They will also enjoy individual subject support each week, in addition to the onsite support of the Frewen Teaching Assistants.

Plumpton College, which has nearby centres at Netherfield and Flimwell, will provide a tutor to visit Frewen one day a week to deliver a one-year BTEC Vocational Studies course. Units are likely to include Horticulture, Animal Care, Forestry and/or Conservation, although there are many other related options, such as Engineering and Machinery, and Sports Ground Management, also available.







## THE FREWEN EXPERIENCE

### Courses

Frewen College offers most of its academic and vocational Sixth Form courses in conjunction with one of its two partner colleges, Bexhill College and Plumpton College. The courses offered at sixth form will be appropriate for each year's intake and will focus on each student's individual progression, development and achievement.

### Personal Development

All Sixth Formers take the ASDAN Personal and Social Development Qualification which focuses on helping students become confident and responsible individuals who make a positive contribution to society and embrace change. The programme introduces new activities and personal challenges and students learn to manage risk together with their own wellbeing.



### Leadership

Recent research shows that entrepreneurs in the UK are twice as likely to be dyslexic as the general population, so we are keen for our students to develop their leadership skills. Our Sixth Formers have access to activities which will develop these skills, such as the Duke of Edinburgh Award Scheme and the Young Enterprise Scheme.

The National Citizen Service Scheme gives 16 and 17 year olds across England the chance to meet others and tackle outdoor challenges on an exciting residential week away from home, join with local businesses and social leaders to learn new skills, discover more about their area and make their mark by developing and delivering local volunteering projects that matter to them.

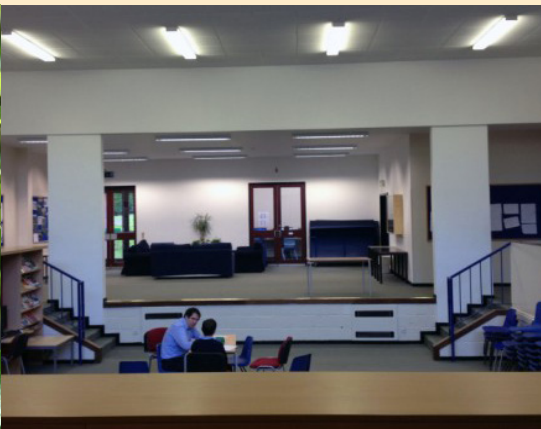
Sixth Formers are also encouraged to support younger pupils, for example by taking on a mentoring or "buddy" role with Year 7 pupils, or helping to run clubs or activities.

### Creative and Performing Arts

Music, Art and Drama have a strong tradition of excellence at Frewen College and Sixth Formers have the opportunity to study Music, Art and Drama with private singing or instrument lessons and LAMDA exams available. The Sixth Form performance group, Six One, organises music and events, and students are encouraged to take part in the girls' choir, or to get involved, front-of-house or behind-the-scenes, with our school concerts and our annual, outdoor school drama production, staged in our beautiful chess garden.

### Sport

Sixth Formers are encouraged to take part in the wide range of sporting activities on offer. As well as a running track and cross-country trail, mountain bike trail, football and rugby pitches, and netball and tennis courts, Sixth Formers can use the fitness suite or outdoor swimming pool, go kayaking, trekking or orienteering.



# ENTRY REQUIREMENTS



We welcome young people with Specific Learning Difficulties (SpLD) such as dyslexia, dyspraxia and dyscalculia, as well as speech and language, and sensory integration difficulties. A number may have other learning difficulties in combination with dyslexia or other SpLD, but we do not admit those with emotional or behavioural problems.



INDEPENDENT  
SCHOOLS  
ASSOCIATION

Please note that all applications for Frewen College Sixth Form must be made directly to Frewen College in the first instance. Frewen College is also able to give guidance on Local Authority funding applications if required.

For more information or to arrange an interview, please contact the school.



## Contact us!

For further information, enquiries, or to request a visit, please contact Annabel Edwards, Principal's PA & School Secretary, at the address below:



Frewen College  
Rye Road  
Northiam  
Rye  
East Sussex  
TN31 6NL



01797 252494

[www.frewencollege.co.uk](http://www.frewencollege.co.uk)  
[sixthform@frewencollege.co.uk](mailto:sixthform@frewencollege.co.uk)  
[office@frewencollege.co.uk](mailto:office@frewencollege.co.uk)



Bexhill 6th Form College



Plumpton College



Regd Charity no. 307019